

150 SERIES



- Compact size valve built for maximum durability and robust performance in the toughest applications
- 100% helium leak tested to 1×10^{-4} ml/s for performance and reliability
- Soft tip valves feature a patented Acetal non-rotating soft tip stem, and a back-up metal-to-metal seal (**U.S. Patent 6,820,857**)
- Available in Zinc-Nickel plated Steel, electropolished Stainless Steel, and Brass
- FKM o-ring seal and PTFE back-up ring below the stem threads to protect from corrosion and galling; PTFE packing optional
- All stem threads are rolled for strength and ease of operation
- Patented body-to-bonnet, metal-to-metal seal is designed to significantly increase the pressure range of the valve (**U.S. Patent 7,758,014**)

SPECIFICATIONS

Materials	Zinc-Nickel plated Steel, electropolished 316 Stainless Steel*, 360 Brass
Connections	1/8" NPT, 1/4" NPT, 7/16"-20 UNF-2B, 9/16"-18 UNF-2B Male-male, Male-female, Female-female, in-line and angled configurations
Pressure rating**	6,000 psi @ 200 °F
Orifice size	0.172"
Flow coefficient	C_v 0.42
Stem seal & type	All 316 Stainless Steel stems with FKM o-ring and PTFE back-up ring below the threads, PTFE packing optional
Options	Panel mountings, o-ring materials, handles, packings, regulating stem and stem tips
Weight	Approximately 0.5 lb.

* All 316SS products meet the requirements of NACE MR0175/ISO 15156-3.


** This pressure ratings applies to all 150 series Mini Valves except the following which have pressure ratings as shown:

Brass 7/16"- 20 UNF-2B connection: 5,000 psi @ 200 °F

Stainless Steel 9/16"- 18 UNF-2B connection: 5,000 psi @ 200 ° F

Steel 9/16"- 18 UNF-2B connection: 4,000 psi @ 200 ° F

Brass 9/16"- 18 UNF-2B connection: 2,000 psi @ 200 °F

 **WARNING:** This product can expose you to chemicals including Lead and Nickel, which are known to the State of California to cause cancer and birth defects or other reproductive harm. For more information go to www.P65Warnings.ca.gov

NOTE: All NOSHOK valve products conform to the MSS SP-99 instrument valves standards, and valves supplied with packing also conform to MSS SP-132 compression packing systems for instrument valves standard.

SERIES	1	150 Series, soft tip				
CONNECTION SIZES	51	1/8" NPT	92	7/16"- 20 UNF-2B*		
	52	1/4" NPT	93	9/16"- 18 UNF-2B*		
VALVE TYPES	MMB	Male-Male, Brass	MFC	Male-Female, Steel	MFS	Male-Female, Stainless Steel
	MFB	Male-Female, Brass	EMFC	Extended Male-Female, Steel	EMFS	Extended Male-Female, Stainless Steel
	FFB	Female-Female, Brass	FFC	Female-Female, Steel	FFS	Female-Female, Stainless Steel
	EFFB	Extended Female-Female, Brass	EFFC	Extended Female-Female, Steel	EFFS	Extended Female-Female, Stainless Steel
	MMAB	Male-Male Angle, Brass	MMAC	Male-Male Angle, Steel	MMAS	Male-Male Angle, Stainless Steel
	MFAB	Male-Female Angle, Brass	MFAC	Male-Female Angle, Steel	MFAS	Male-Female Angle, Stainless Steel
	FFAB	Female-Female Angle, Brass	FFAC	Female-Female Angle, Steel	FFAS	Female-Female Angle, Stainless Steel
	MMC	Male-Male, Steel	MMS	Male-Male, Stainless Steel		

Please consult your local NOSHOK Distributor or NOSHOK, Inc. for availability and delivery information.

* Available only on EFFB, EFFC and EFFS valve types.

EXAMPLE

Series150 soft tip
 Connection size1/4" NPT
 Valve type Female-female, Steel

152 - FFC

To meet all of your specific application requirements, the following **additional options** are available for these needle valves. To order all or any of these options, simply add them to the part number as shown in the diagram below.

NOTE 1: The example shown includes **ALL** possible additional options. Please include **ONLY** the options required for your application when building your part number. (EXAMPLE: 152-MFC-HL3)

NOTE 2: When a packing option is selected, an o-ring option is NOT available.

ORDERING INFORMATION - ADDITIONAL OPTIONS				
PACKING	P1	PTFE		
STEM TIPS	T3	PCTFE	T10	Regulating Acetal
	T4	PEEK	T11	Regulating PCTFE
O-RINGS*	EM1	EPDM	KZ1	FFKM (Perfluoroelastomer)
			NB1	NBR
PANEL MOUNTINGS	PM1	Panel mount (1 nut)	PM2	Panel mount (2 nuts)
HANDLE	HL3	1" Round knurled		

Please consult your local NOSHOK Distributor or NOSHOK, Inc. for availability and delivery information.

* Other o-ring materials available on request.

Please note that the standard o-ring in all the NOSHOK mini valves is FKM and the standard handles are Brass round knurled (HL3) handles, Steel mini "T" handles (HL7), and 316SS mini "T" handles (HL7).

The handle material will always match the material of the valve, unless otherwise specified. For example, the round knurled (HL3) on a 152-FFB will be Brass. When only the standard configuration is needed, no additional designations are necessary. Please consult the factory for special application requests.

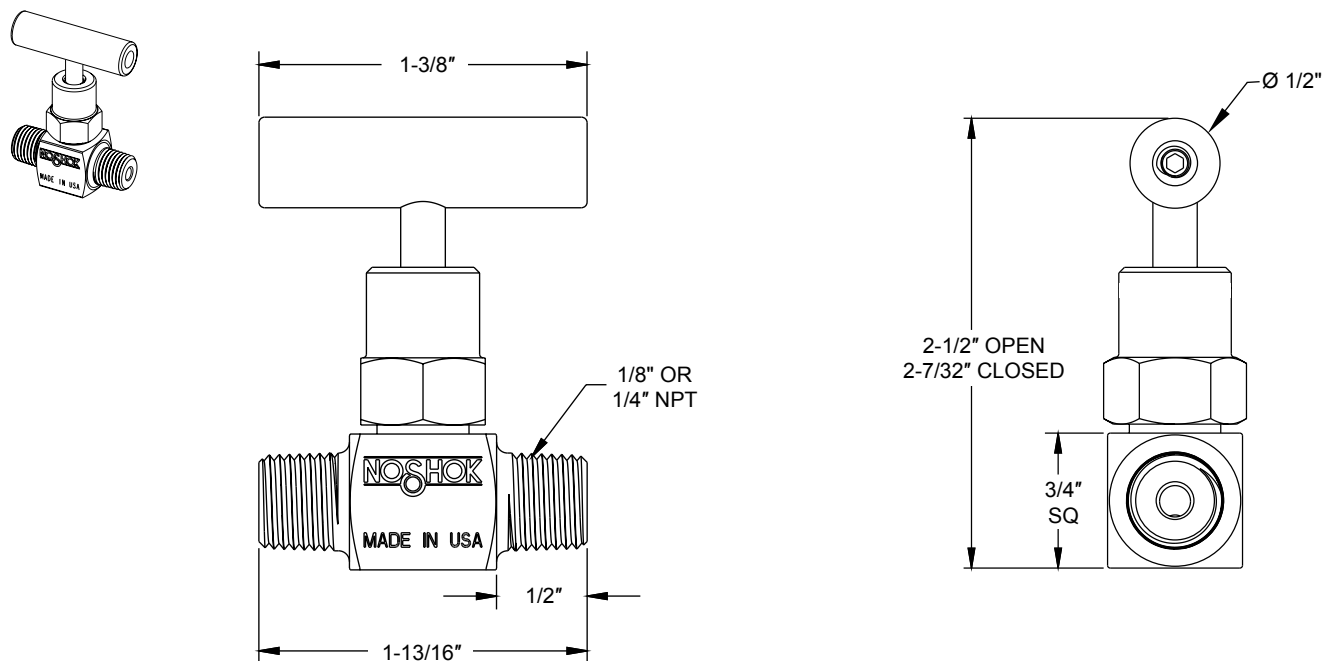
EXAMPLE with Additional Options

Series.....150 soft tip
 Connection size.....1/4" NPT
 Valve type..... Female-female, Steel
 Packing.....PTFE
 Stem tip PCTFE
 Panel mount.....Panel mount (2 nuts)
 Handle 1" Round knurled

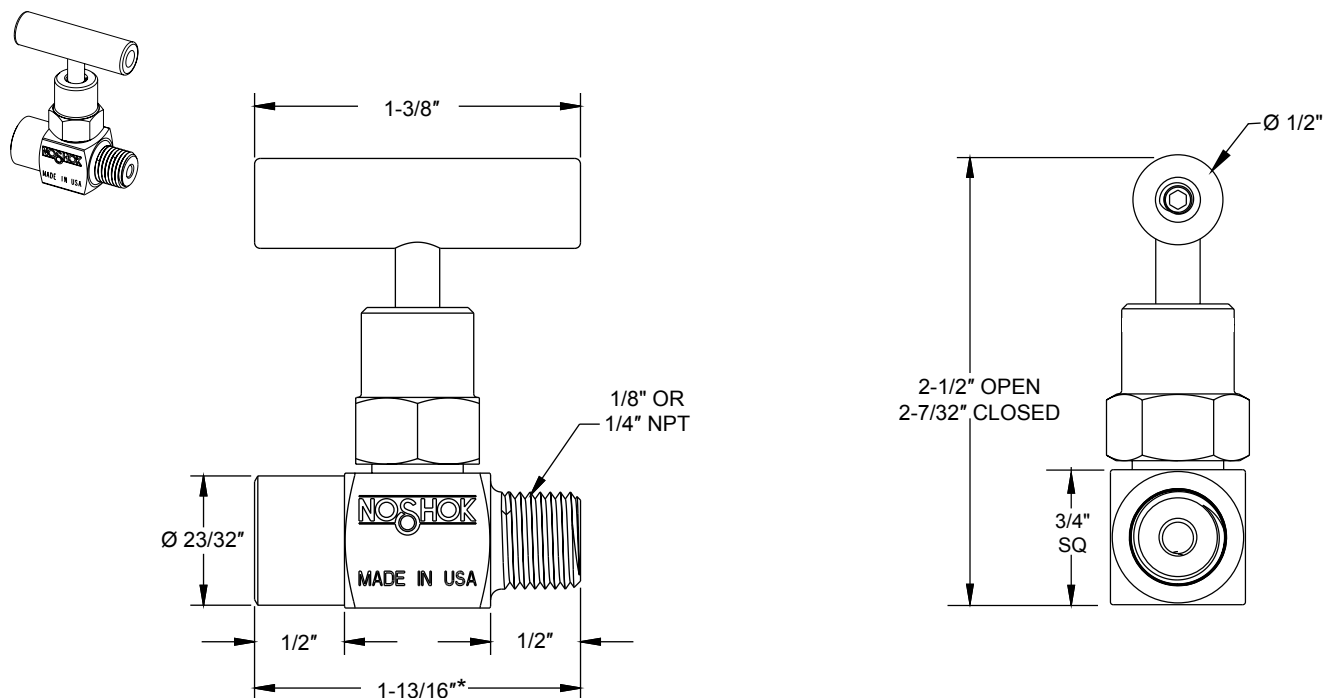
152 - FFC - P1 - T3 - PM2 - HL3

Dimensions

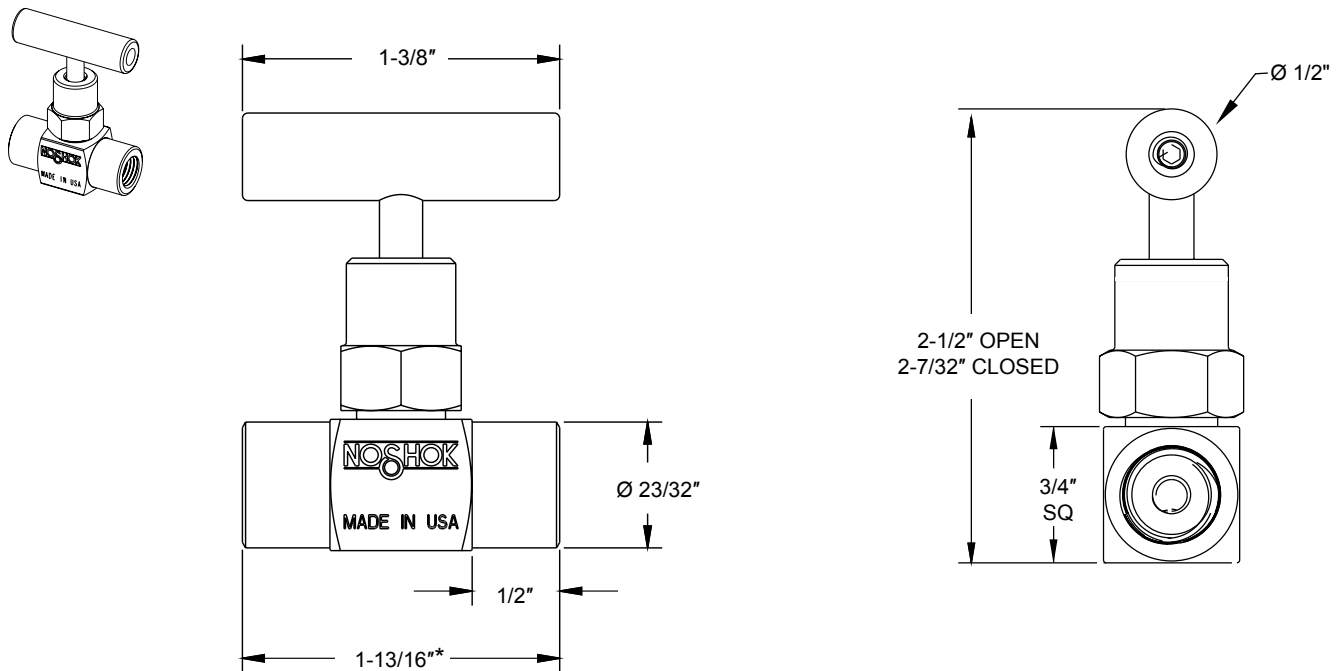
Male-Male



Male-Female

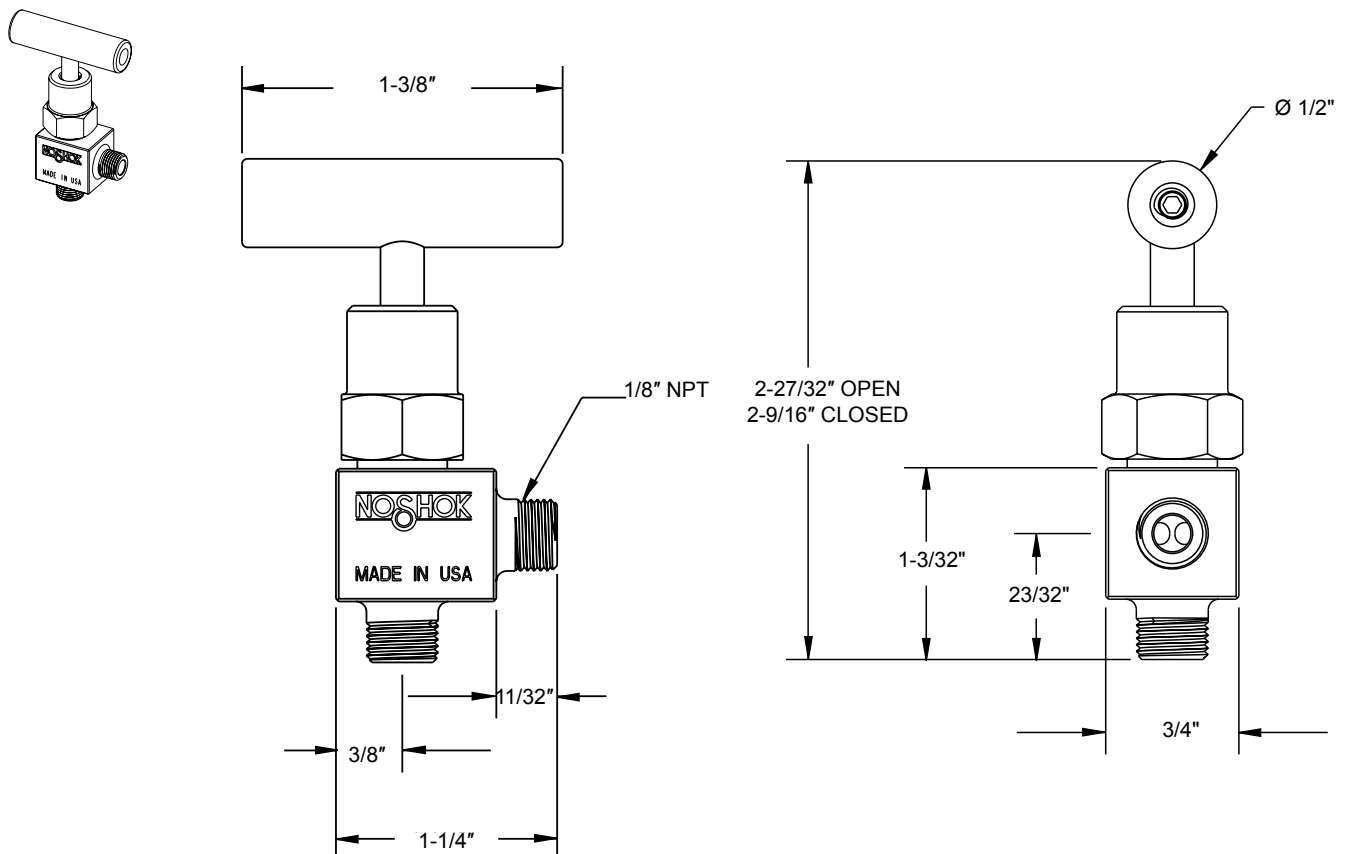


Female-Female



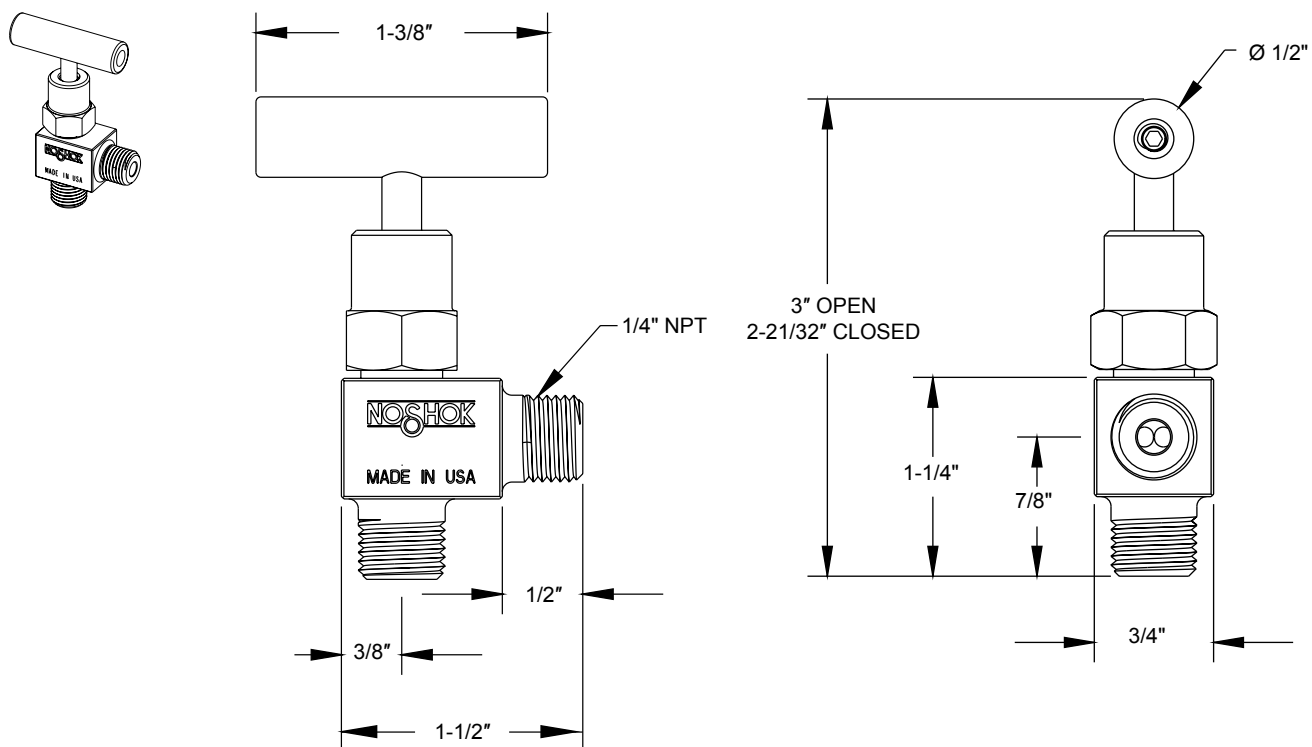
*Dimension on extended version is 2-1/4"

1/8" Male-Male Angle

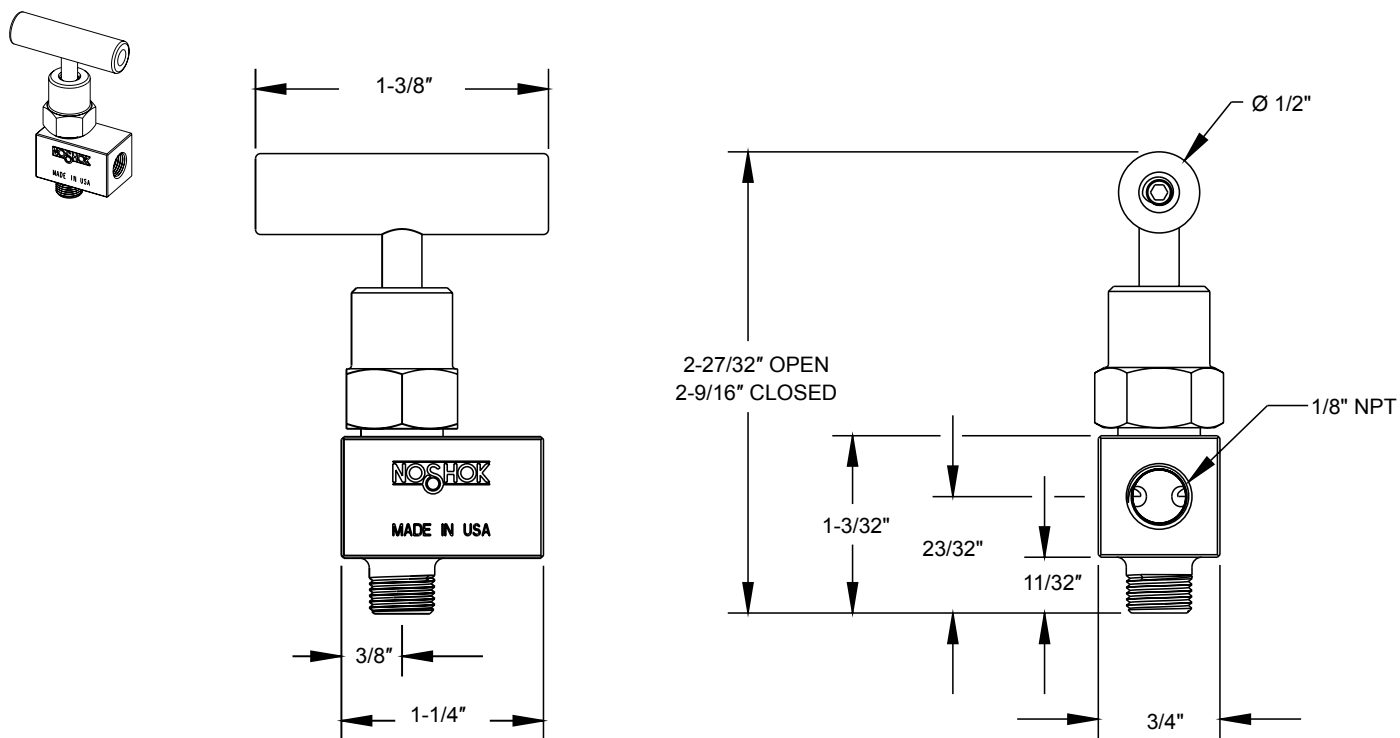


Dimensions

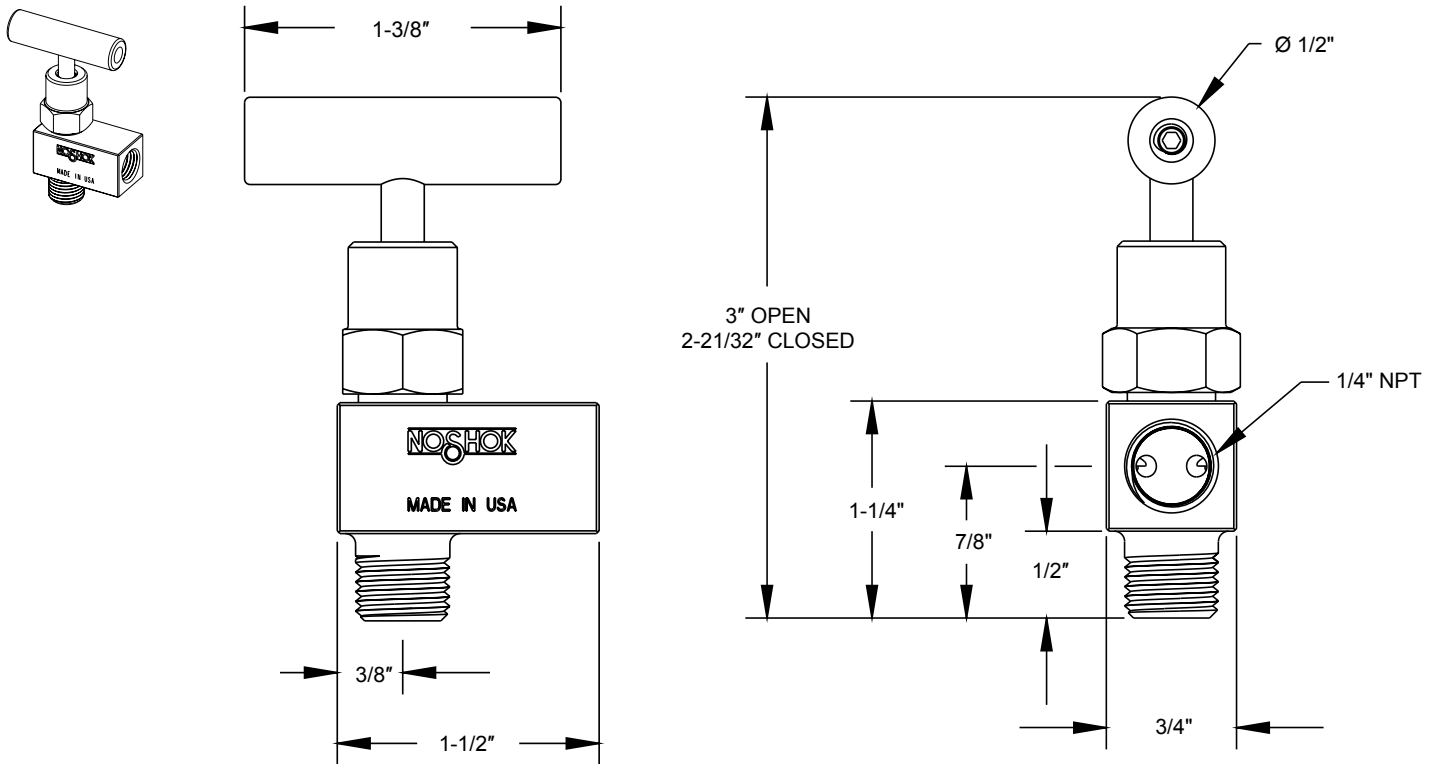
1/4" Male-Male Angle



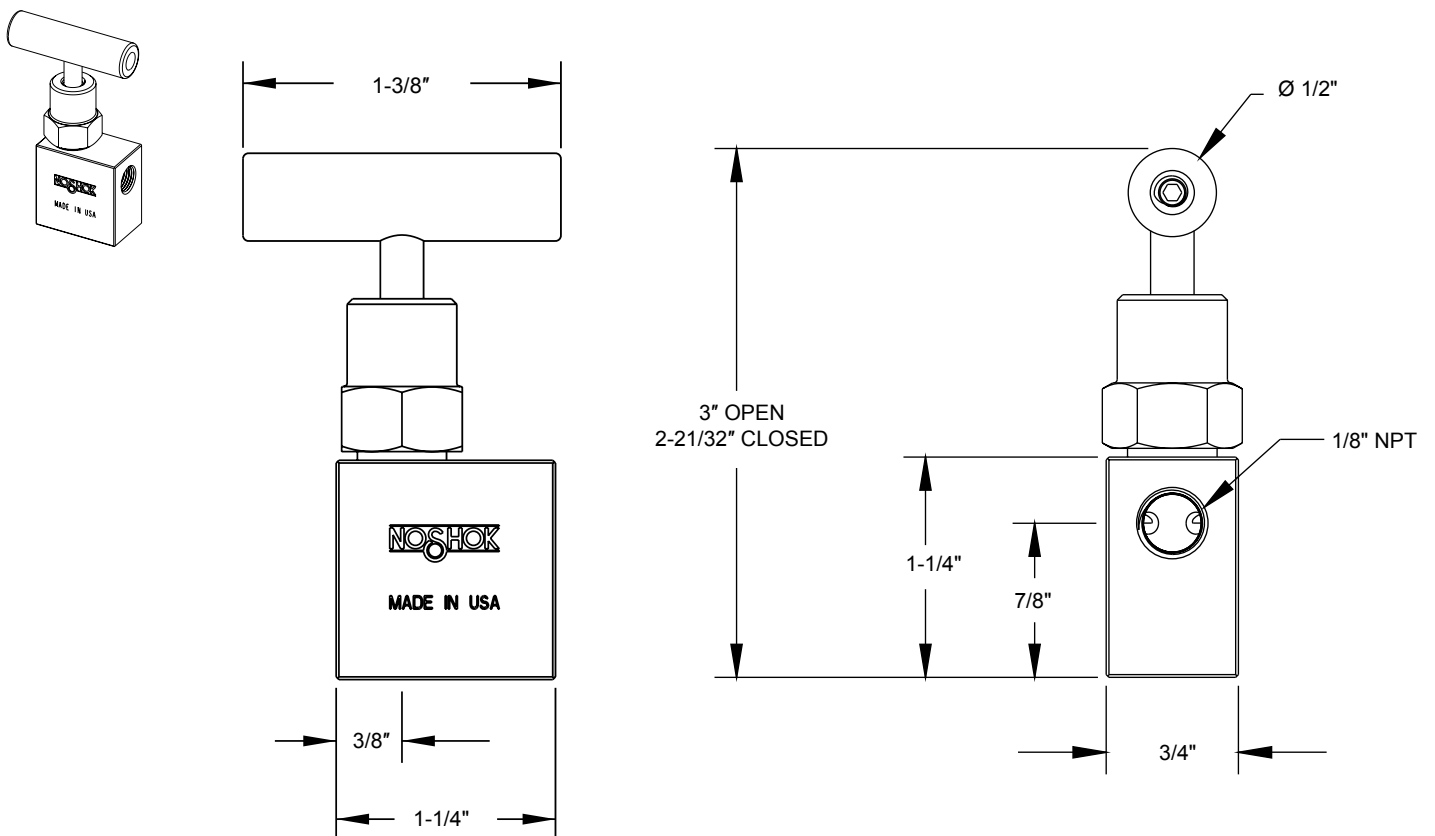
1/8" Male-Female Angle



1/4" Male-Female Angle

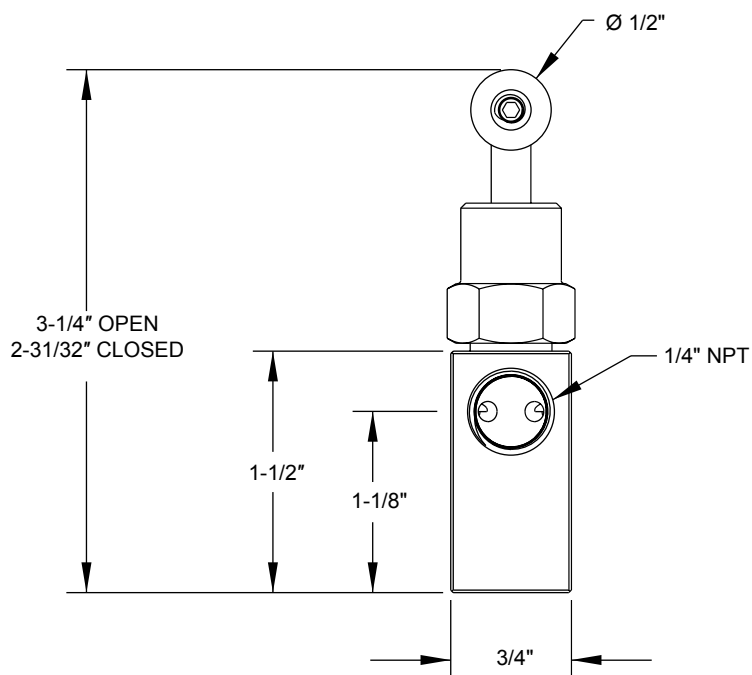
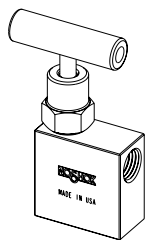


1/8" Female-Female Angle



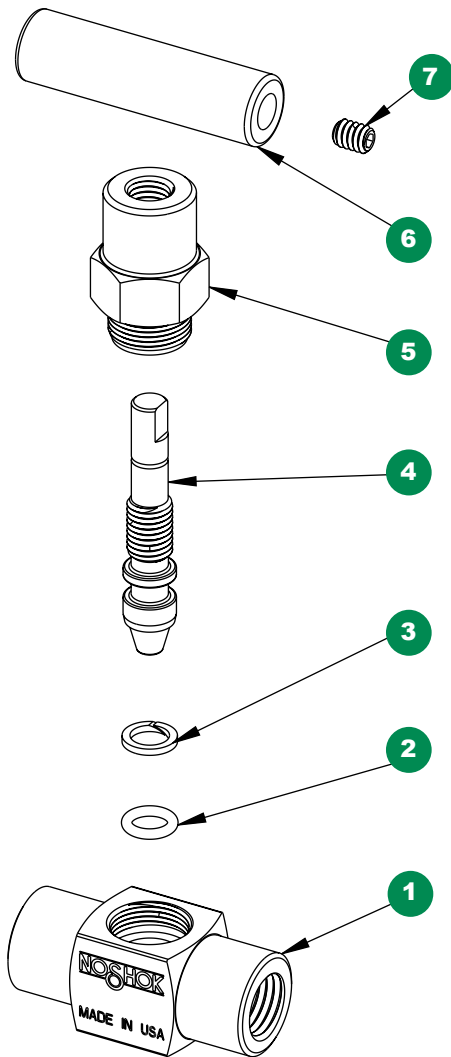
Dimensions

1/4" Female-Female Angle



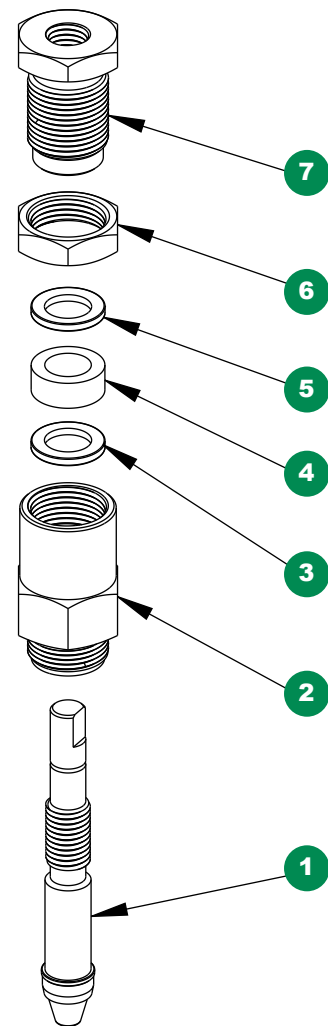
For panel mount, packing,
& stem tip dimensions,
see pgs. 64-67.

Mini, Soft Tip



- 1 Mini valve body
- 2 FKM o-ring
- 3 PTFE back-up ring
- 4 Soft tip stem
- 5 Mini valve bonnet
- 6 Mini valve "T" handle
- 7 Set screw

Option With Packing



- 1 Soft tip packing stem
- 2 Mini valve packing bonnet
- 3 Packing washer
- 4 Packing
- 5 Packing washer
- 6 Jam nut
- 7 Packing adjustment screw