

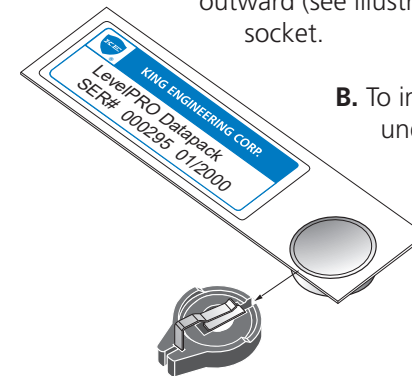
Datapack iButton Located on Main Circuit Board

Installing Updated Datapack iButton

Non-addressable application parameters (i.e., tank name, network polling address, tank capacity profile) require updated datapack programmed at the factory. Use caution when accessing the datapack — internal circuitry and electrical connections should not be exposed to moisture. Turn off power to unit prior to handling internal components.

Turn off power or open the enclosure and disconnect the plug-in terminal connector. Datapack iButton is readily accessible at the upper portion of the circuit board.

A. To remove Datapack, lift up and slide Datapack outward (see illustration) to free it from the clip socket.

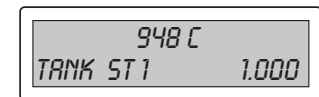
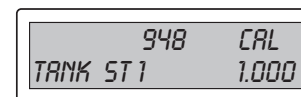


B. To install datapack, slide datapack under the clip. Make certain Datapack iButton is fully seated in socket.

Calibration iButton (Generic)

This generic memory module is simply programmed with the LevelPRO serial number. It provides a digital representation of the analog-to-digital (A/D) conversion performed by the processor. Actual full scale resolution is 0-4095 corresponding to the 4-20 mA input signal.

In normal mode, the LevelPRO processor with a Calibration iButton will display a value and the "CAL" designation. For multiple tank models having the Operator Interface keypad, if the calibration menu selection is set to Calibration ON this will cause the "C" status symbol to appear.



Error (Datapack iButton Not Installed)

When the LevelPRO processor is operated with the Datapack iButton (or Calibration iButton) removed, an error message will be displayed. This may also occur if the installed iButton has been physically damaged.

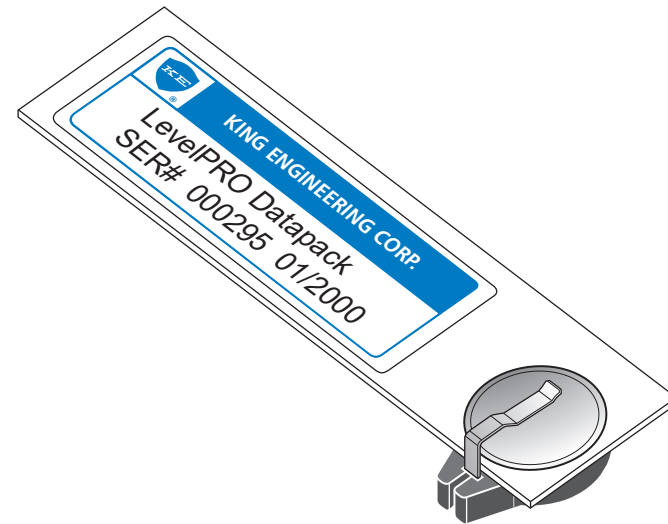


Troubleshooting

For more information, refer to the following user instruction manuals:

- EX-1818 LevelPRO Multiple Tank Processor; Models 4641-2-0, 4641-3-0, 4640-4-0
- EX-1819 LevelPRO Single Tank Processor; Models 4640-2, 4640-3

Installation and Operations Manual



iButton Memory for the LevelPRO Tank Processor

Referred to as the Datapack iButton, this memory module contains a default liquid density value, readout units factor and tank name. Critical data such as the capacity profile are not user-addressable to prevent any possible corruption of the original factory programming.